



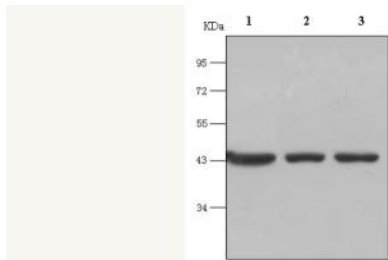
## SPECIFICATION SHEET

<b>Catalog number:</b>	SLS-KY2001
<b>Product name:</b>	Anti- $\beta$ -actin Mouse Monoclonal Antibody
<b>Lot:</b>	
<b>Clone #:</b>	MG3
<b>Antibody type:</b>	Mouse IgG1
<b>Concentration:</b>	mg/ml
<b>Specification:</b>	100ul/vial or 1ml/vial
<b>Immunogen:</b>	Full-length human $\beta$ -actin protein.
<b>Reactivity:</b>	Human, Rat, Mouse, Drosophila, Chicken, Rabbit, Goat, etc.
<b>Buffer:</b>	0.01M pH7.4 PBS, 0.1%BSA, 50% Glycerol
<b>Preservative:</b>	0.02% Sodium azide
<b>Storage:</b>	Stored at 2-8°C short term, -20°C or colder long term. Avoid multiple freeze/thaw cycles.
<b>Expiration date:</b>	3 Years
<b>Product Description:</b>	$\beta$ -actin is a major component of the cytoskeleton and is widely expressed in eukaryotic cells. With a molecular weight of 43 kDa, $\beta$ -actin is highly conserved and stably expressed in cells, so it is commonly used as an internal reference in Western Blot assays.
<b>Recommended Dilution:</b>	Western Blot (WB): 1:1000—1:10000 Immunohistochemistry (IHC): 1:100—1:1000
<b>Hazard/Biohazard:</b>	This material contains sodium azide as a preservative; take appropriate precaution. There is no known biohazard associated with this product.

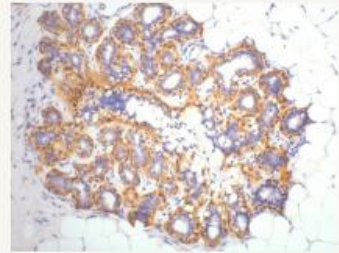
**Notes:**

1. Please use anti-mouse secondary antibody, e.g., Goat anti-Mouse IgG(H+L)-HRP (SLS-KY3001).
2. Determine the optimal antibody dilution according to experimental conditions.
3. This product is for scientific research use only and not for clinical diagnosis.

**Related Data:**



WB Detection with Anti-  $\beta$ -actin (MG3) Antibody. The antibody was diluted at 1:5000. The antigens used were: HeLa cell lysate (Lane 1), rat brain tissue (Lane 2), and mouse brain tissue (Lane 3), with 20  $\mu$ g of sample loaded per well.



IHC Detection with Anti-  $\beta$ -actin (MG3) Antibody. The antibody was used to detect human ovarian cancer tissue at a dilution of 1:200.